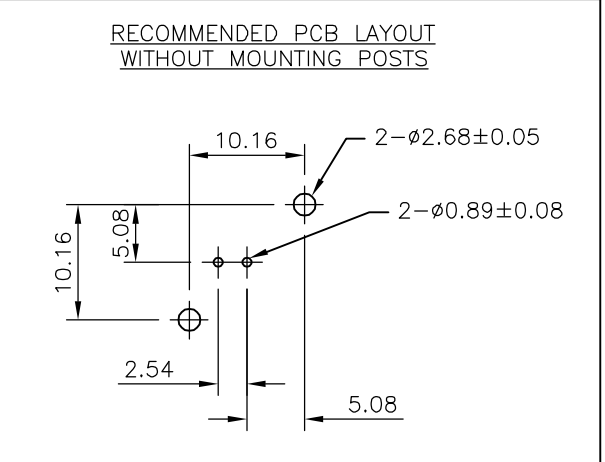
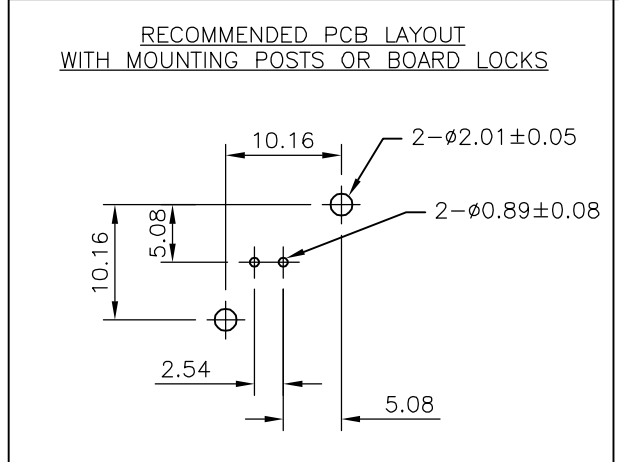
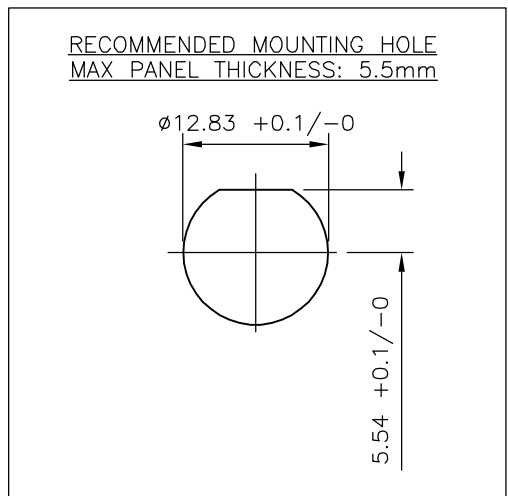
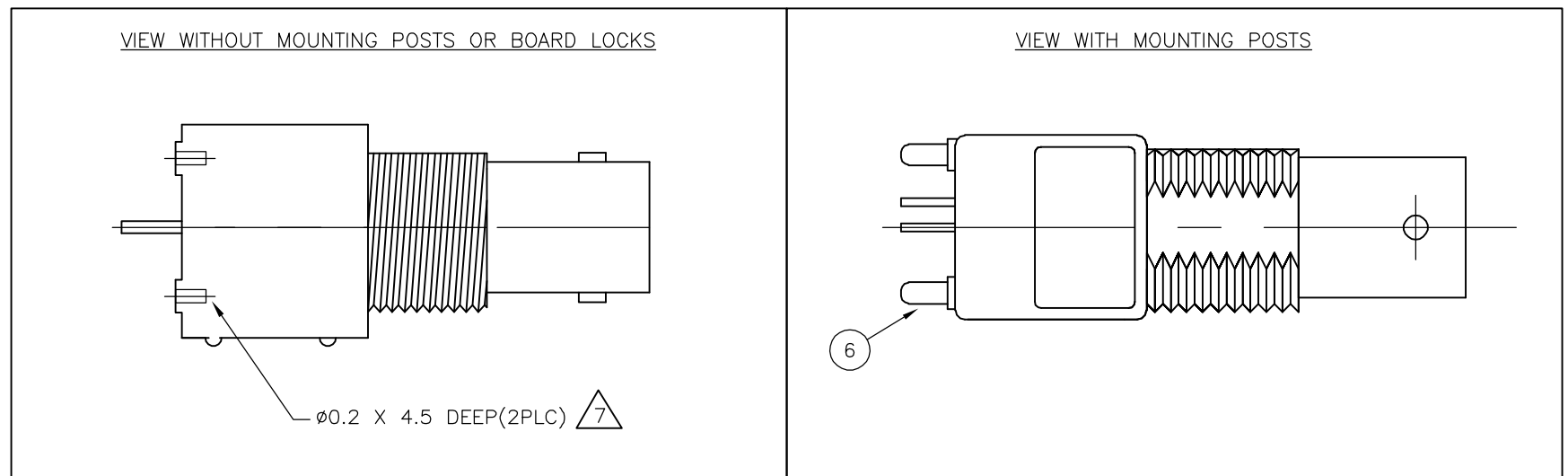
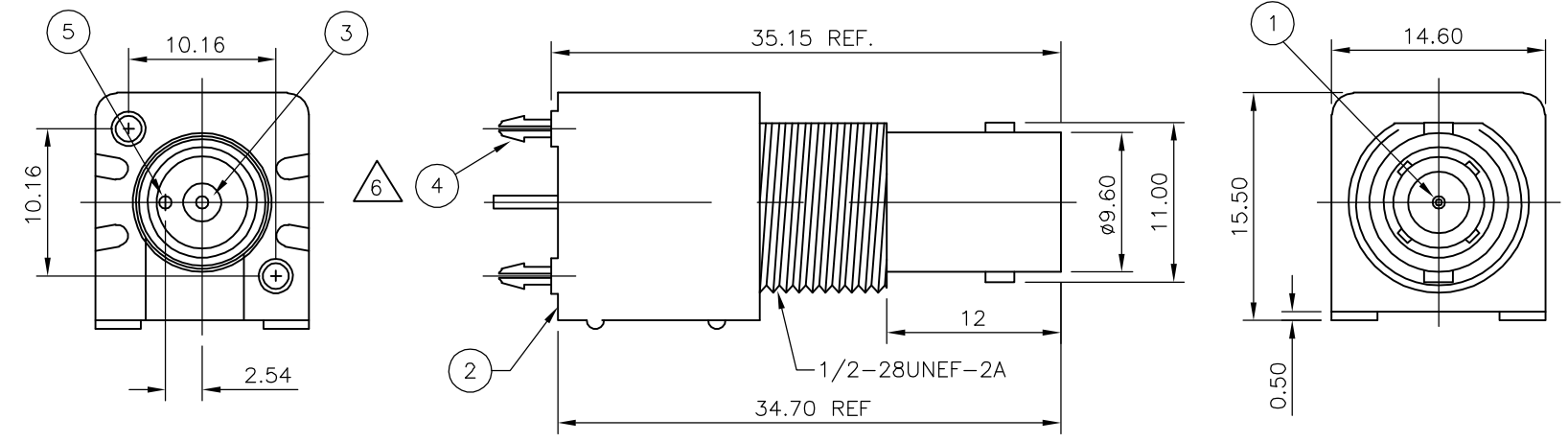


THIS DRAWING IS UNPUBLISHED. RELEASED FOR PUBLICATION MAY, 2006.
 © COPYRIGHT 2006 BY TYCO ELECTRONICS CORPORATION. ALL RIGHTS RESERVED.

LOC	DIST	REVISIONS					
E	B	P	LTR	DESCRIPTION	DATE	DWN	APVD
		A		FIRST ISSUE	11MAY06	JMS	FWK

- NOTES:
- ① SINGLE PACK IN ACCORDANCE WITH AMP SPEC 107-3275
 - ② 50 TRAY PACK IN ACCORDANCE WITH AMP SPEC 107-3275
 - ③ Au PLATING
 - ④ Ni PLATING
 - ⑤ TIN PLATING
 - ⑥ MOUNTING POSTS ARE OPTIONAL SEE TABLE FOR PART NUMBERS
 - ⑦ RECOMMENDED SELF-TAPPING SCREW 221108-4
 - 8 RECOMMENDED MOUNT NUT 1-1634816-0
 - 9 RECOMMENDED LOCKWASHER 1-1634817-0
 - 10 CHARACTERISTICS

FREQUENCY RANGE:	DC - 4GHz
NOMINAL IMPEDANCE:	50 OHMS
WORKING VOLTAGE:	500V RMS
INSULATION RESISTANCE:	5000 MOHMS
DIELECTRIC WITHSTAND VOLTAGE:	1500V RMS
CONTACT RESISTANCE:	
CENTRE CONTACT	1.5 mOHMS
OUTER CONTACT	0.2 mOHMS
 - 11 MECHANICAL CHARACTERISTICS DURABILITY: 50 CYCLES
 - 12 FOR TECHNICAL DATA REFER TO YOUR LOCAL TYCO ELECTRONICS SALES OFFICE
 - 13 ALL DIMENSIONS ARE NOMINAL FOR REFERENCE ONLY UNLESS OTHERWISE STATED



QTY	QTY	QTY	QTY	QTY	QTY	QTY	QTY	MATERIAL	DESCRIPTION	ITEM
-	-	-	-	2	2			PHOS. BRONZE ③	MOUNTING POST	6
1	1	1	1	1	1			COPPER ⑤	SOLDER TAIL	5
-	-	2	2	-	-			PHOS. BRONZE ⑤	BOARD LOCK	4
1	1	1	1	1	1			PE-606	INSULATOR	3
1	1	1	1	1	1			ZINC ALLOY ④	BODY	2
1	1	1	1	1	1			PHOS. BRONZE ③	CONTACT	1
6--2	1--2	6--1	1--1	6--0	1--0					
②	①	②	①	②	①					
QUANTITY PER ASSY								PARTS LIST		

THIS DRAWING IS A CONTROLLED DOCUMENT.

DWN	J.SANDWELL	11MAY06	 Tyco Electronics Corporation Bideford EX39 4HE	
CHK	S.PARLOW	11MAY06		
APVD	F.WHEELER-KING	11MAY06		
PRODUCT SPEC				
APPLICATION SPEC			NAME	BNC STRAIGHT SHIELDED PCB SOCKET 50 OHM METAL
WEIGHT	-		SIZE	A3
MATERIAL	SEE TABLE		CAGE CODE	00779
			DRAWING NO	C-1634627
			RESTRICTED TO	-
CUSTOMER DRAWING			SCALE	NTS
			SHEET	1 OF 1
			REV	A